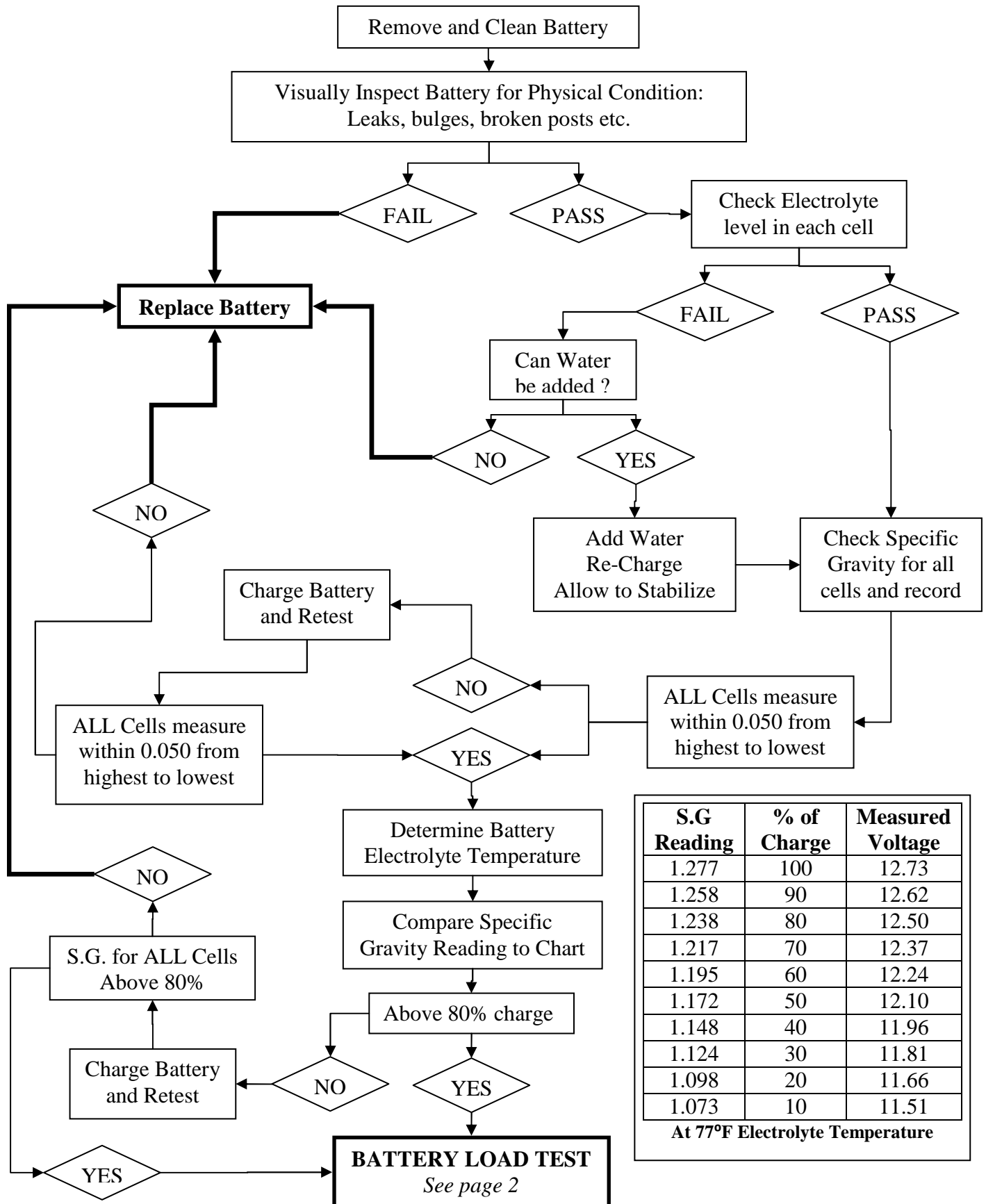


BATTERY TESTING CHART



BATTERY LOAD TEST

From page 1

Determine Battery
Temperature

Connect Load
Tester and Volt
Meter to Battery

Apply Electrical Load
Equal to ½ of CCA
Rating for 15 Seconds

With Load Still
Applied Read
Battery Voltage

Battery Meets or
Exceeds Minimum
Voltage

**** CAUTION ****

**BATTERIES CAN
EXPLODE WHEN LOAD
TESTED. BE SURE AND
WEAR APPROPRIATE
PERSONAL SAFETY
EQUIPMENT**

BATTERY LOAD CHART

Battery Temp	Acceptable Voltage
120 °F	10.1 vdc
110 °F	10.0 vdc
100 °F	9.9 vdc
90 °F	9.8 vdc
80 °F	9.7 vdc
70 °F	9.6 vdc
60 °F	9.5 vdc
50 °F	9.4 vdc
40 °F	9.3 vdc
30 °F	9.2 vdc
20 °F	9.1 vdc
10 °F	9.0 vdc
0 °F	8.9 vdc

Minimum acceptable voltage
under load

Replace Battery

NO

YES

Return Battery
to Service