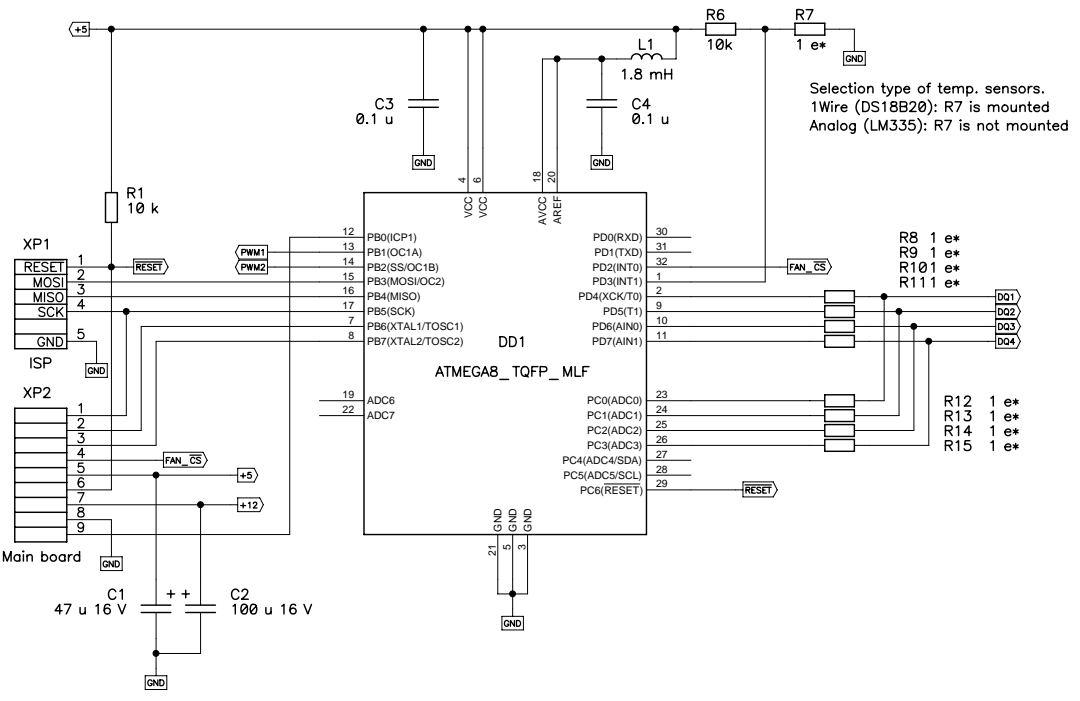
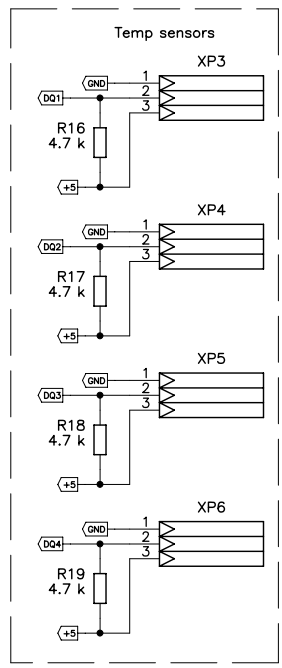
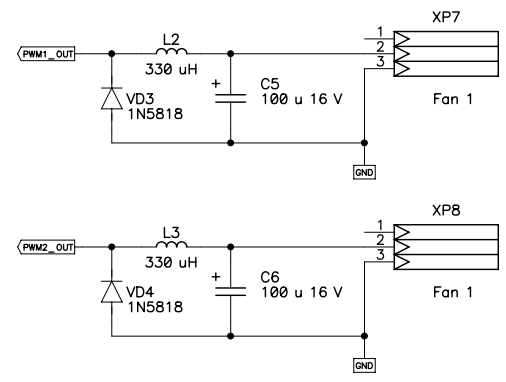


You can mount original (Oka275) power sch (complementary FETs) or alternative (FET/IGBT driver). It might be any dual non-inverting low side driver, pin-to-pin compatible to IR4427. For example, TC4427 or UCC37324.



Selection type of temp. sensors.
1Wire (DS18B20): R7 is mounted
Analog (LM335): R7 is not mounted

Title		
Size	Number	Rev
A3		
Date	Drawn by	
Filename	Sheet	of